



Fairfield Road, London, E3

BUTLER  STAG





**Guide Price - £400,000 to £425,000**

**A fantastic opportunity to purchase a two-bedroom, two-bathroom ground-floor apartment in the heart of Bow. This property benefits from a private outdoor space and is extremely well-connected.**



## Leasehold

- Two Double Bedrooms
- Chain Free
- Short Walk To Victoria Park
- EWS1 Compliant
- Two Bathrooms
- Ample Storages Throughout
- Close To Bow Road
- Communal Roof Terrace

The property has been painted throughout but still offers great potential for updating, making it ideal for buyers looking to add their own personal touch.

Situated in a sought-after location with excellent transport links, local amenities, and green spaces nearby, this apartment requires updating throughout but presents an excellent investment or first-time buyer opportunity.

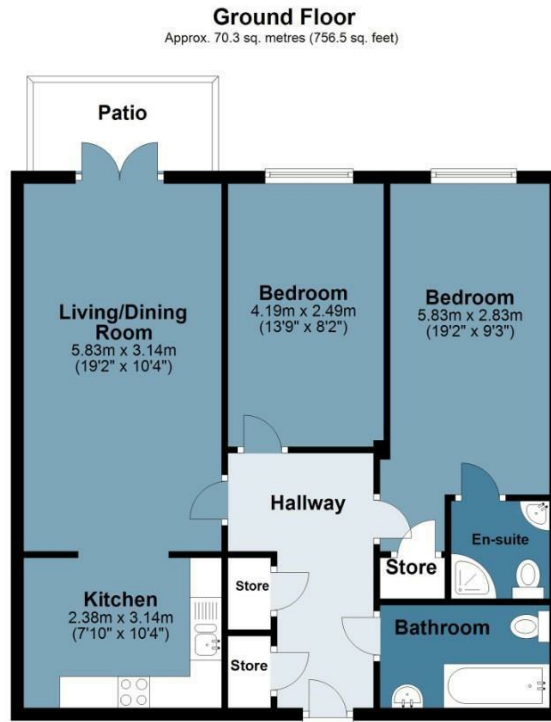




## Fairfield Road

Approx. Gross Internal Area 70.3 Sq M ( 756.5 Sq Ft )

BUTLER & STAG



Measurements are approximate and for illustration purposes only. While we do not doubt the accuracy and completeness, we advise you conduct a careful independent assessment of the property to determine monetary value.  
© @modephoto.uk www.modephoto.co.uk

IMPORTANT NOTICE - These particulars have been prepared in good faith and they are not intended to constitute part of an offer or contract. We have not performed a structural survey on this property and the services, appliances and specific fittings have not been tested. All photographs, measurements, floor plans and distances referred to are given as a guide and should not be relied upon.

BUTLER & STAG

☎ 020 8102 1236

🏠 508 Roman Road, Bow, London, E3 5LU

✉ bow@butlerandstag.com

[www.butlerandstag.uk](http://www.butlerandstag.uk)